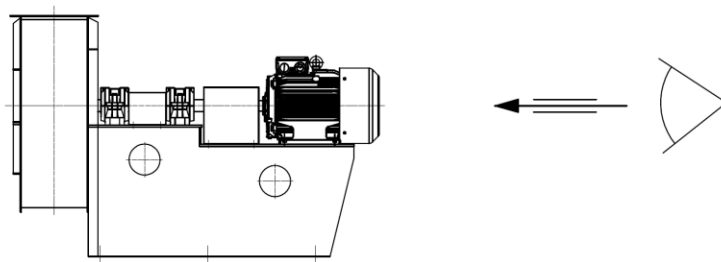
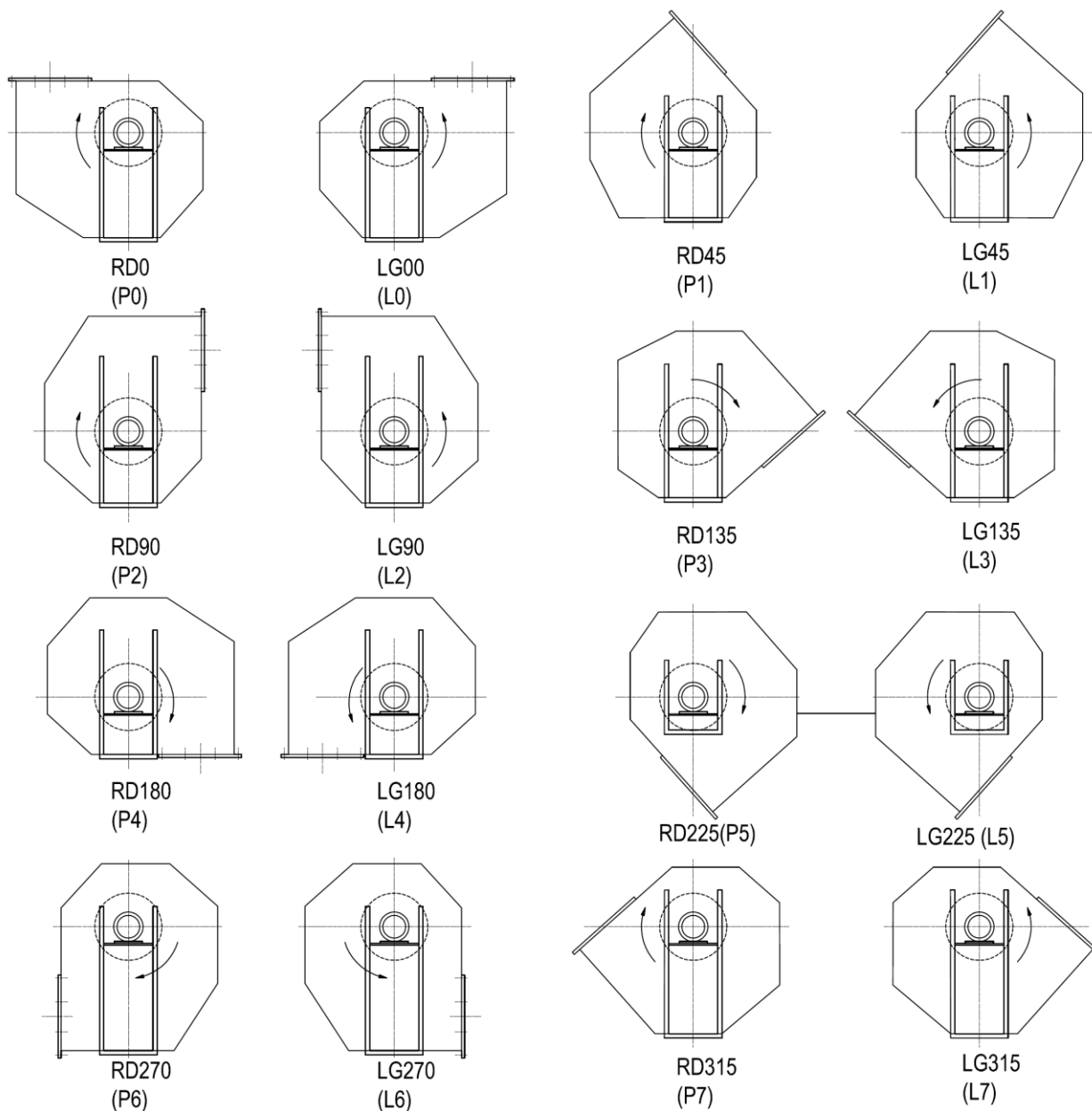
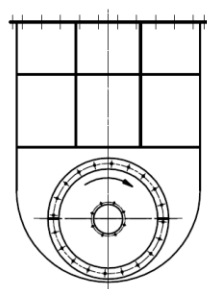


**OZNACZENIE UKŁADU WYLOTU WENTYLATORÓW (wg PN-92/M-43011)
(W NAWIASACH OZNACZENIA wg PN-78/M-43012).**

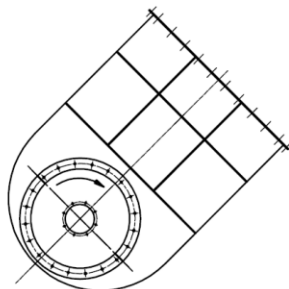


Układ określa się patrząc na wentylator od strony napędu.

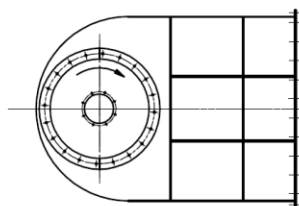
OZNACZENIE UKŁADU WLOTU KOLANOWEGO (wg. PN-92/M-43011).



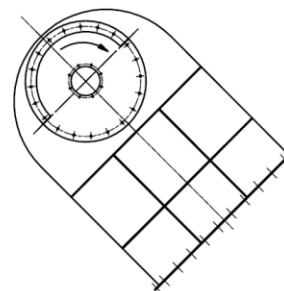
RD0
(K0)



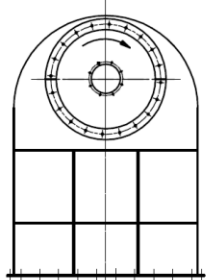
RD45
(K1)



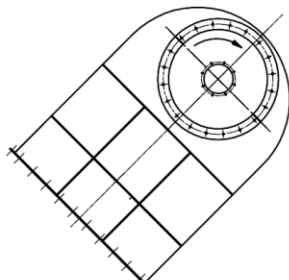
RD90
(K2)



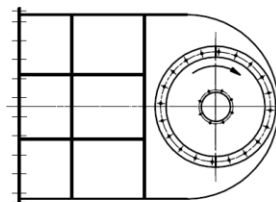
RD135
(K3)



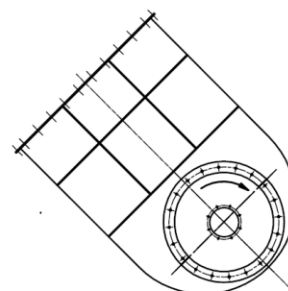
RD180
(K4)



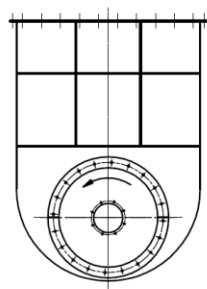
RD225
(K5)



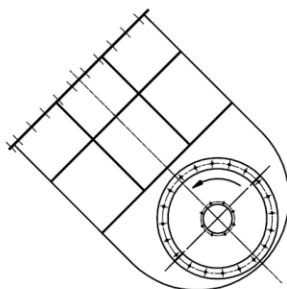
RD270
(K6)



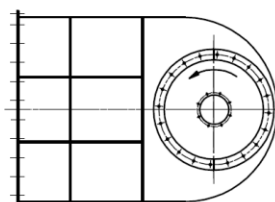
RD315
(K7)



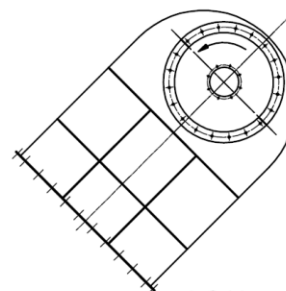
LG0
(K0)



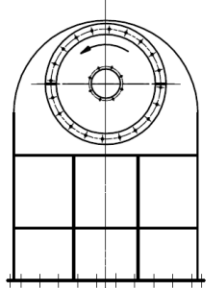
LG45
(K1)



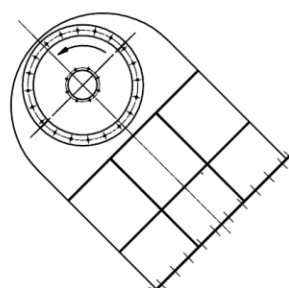
LG90
(K2)



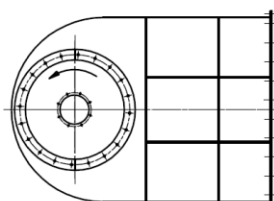
LG135
(K4)



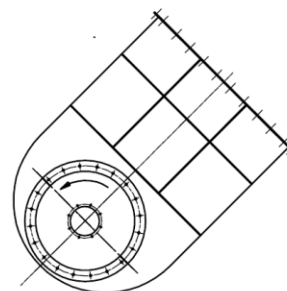
LG180
(K4)



LG225
(K5)



LG270
(K6)



LG315
(K7)